

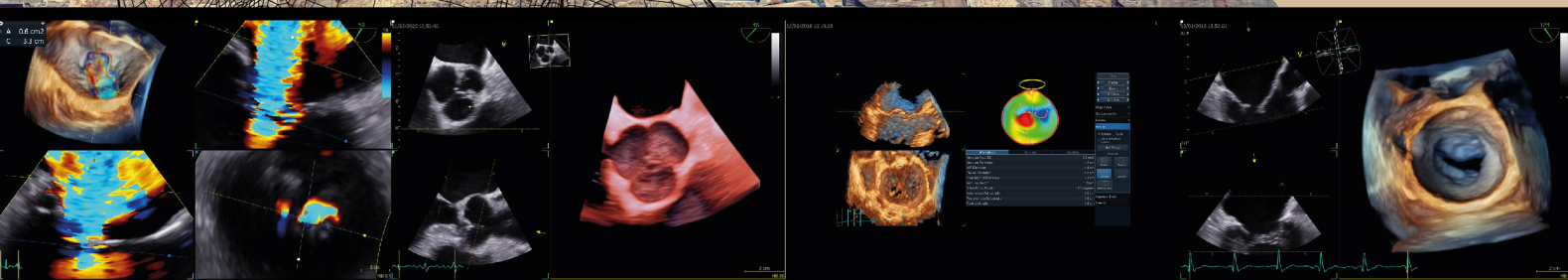


ATHENS MEDICAL GROUP CARDIOVASCULAR IMAGING CONGRESS

31st MARCH - 1st APRIL 2023

ATHENS MARRIOTT HOTEL

ATHENS / GREECE



GEORGIA
CHAPTER

AMERICAN COLLEGE of CARDIOLOGY®

Co-Sponsored by the Georgia Chapter of the American College of Cardiology

Event endorsed by



EACVI

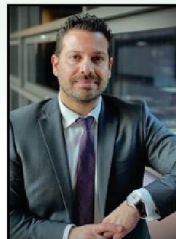
European Association of
Cardiovascular Imaging



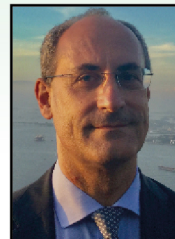
Under the auspices of the
HELLENIC SOCIETY OF CARDIOLOGY



DR. S. KARAGIANNIS
MD, PhD, FESC, FEACVI



DR. K. PAPAPOULOS
MD, PhD, FESC, FEACVI



PROF. LUIGI P. BADANO
MD, PhD, FESC, FACC,
Hon. FASE, Hon FEACVI



DR. MANI VANNAN
MBBS, FACC, FAHA, FASE

CONGRESS DIRECTORS

PCO: INVENTICS A.E. / Medevents.gr

T. 2310 474 400 / E. info@medevents.gr / W. www.medevents.gr

GNTD License: 0933E60000074600

PASCAL Transcatheter Valve Repair System for MR and TR

Efficacy:

- Central Spacer
- Proximal implant release



Safety:

- Reduced leaflet stress
- Elongation in case of entanglement



Manoeuvrability:

- Single leaflet capture
- Atraumatic recapturing

Treat mitral and tricuspid regurgitation with confidence, while respecting the native anatomy of your patients.

Available in 2 implant sizes:

[Edwards.com/PASCAL](https://www.edwards.com/PASCAL) and [Edwards.com/PASCALAce](https://www.edwards.com/PASCALAce)

For professional use. For a listing of indications, contraindications, precautions, warnings, and potential adverse events, please refer to the Instructions for Use (consult [eifu.edwards.com](https://www.eifu.edwards.com) where applicable).

Edwards devices placed on the European market meeting the essential requirements referred to in Article 3 of the Medical Device Directive 93/42/EEC bear the CE marking of conformity.

Edwards, Edwards Lifesciences, the stylized E logo, PASCAL, and PASCAL Ace are trademarks or service marks of Edwards Lifesciences Corporation. All other trademarks are the property of their respective owners.

© 2021 Edwards Lifesciences Corporation. All rights reserved. PP--EU-1346 v1.0

Edwards Lifesciences • Route de l'Etraz 70, 1260 Nyon, Switzerland • [edwards.com](https://www.edwards.com)



Edwards



ATHENS MEDICAL GROUP CARDIOVASCULAR IMAGING CONGRESS

DIRECTORS

Professor Luigi P. Badano, FESC, FACC, Hon FASE, Hon FEACVI

Dr. Mani A. Vannan, MBBS, FACC, FAHA, FASE

Dr. Stefanos Karagiannis, FESC, FEACVI

Dr. Konstantinos Papadopoulos, FESC, FEACVI

31st March – 1st April 2023

Congress venue: Athens Marriot Hotel

PCO: Inventics

Hybrid form (physical presence and online participation) through online platform and live-streaming

REGISTRATION

Registration Form: **onsite attendees with physical presence and online attendees through dedicated platforms and live streaming**

On-site registration fees include participation to the congress, to the common opening ceremony, to the typical congress coffee and lunch breaks, access to the hands-on workshops and certificate of attendance.

Online registration fees include online participation, access to the online workshops and certificate of attendance.

Registration Fees:

-- On-site Registration: **200 €**

-- On-site Registration for EACVI members under 40 years old (50% discount): **100 €**

-- On-site Registration for Radiologists, technicians, clinical application specialists: **100 €**

-- Online Registration: **30 €**

-- On-site / Online Local trainees, students, nurses, staff: **free**

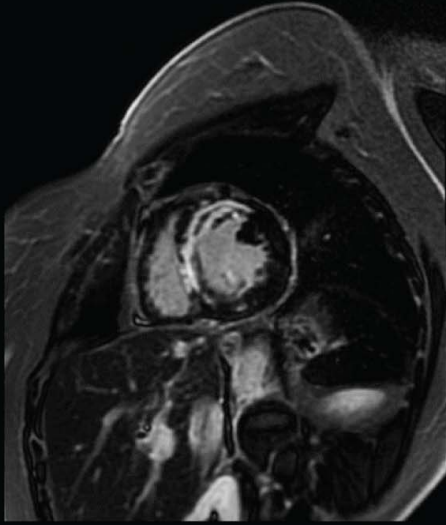
Cancellation received after February 28th, no refund

Cancellation should be notified in writing by e-mail to: info@medevents.gr

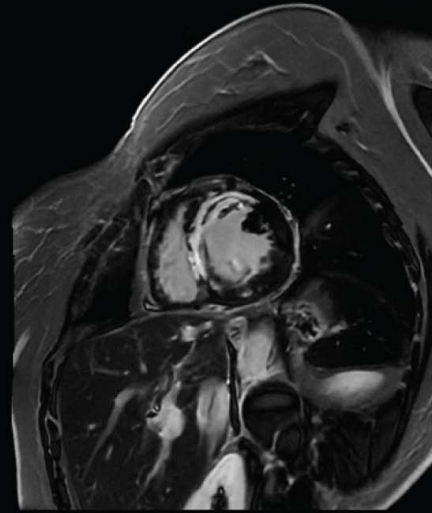
The Congress is marked with **16 credits** of Continuing Medical Education/Continuing Professional Development (CME/CPD) by the Panhellenic Medical Association.

Watch live: www.livemedia.com/acvi23

TOMORROW TODAY



Conventional



AIR™ Recon DL

Level up your image quality with **AIR™ Recon DL**



AIR™ Recon DL[‡], an innovative new reconstruction technology from GE Healthcare based on deep learning, offers a fundamental shift in the balance between image quality and scan time, resulting in TrueFidelity™ MR images that elevate the science of image reconstruction for clinical excellence without conventional compromises.

To learn more, visit [gehealthcare.com/air](https://www.gehealthcare.com/air).



GE Healthcare AE
Σωρού 8-10, 15125 Μαρούσι
Clinical Specialist: Γιάννης Κάτσας, 6981669989

© 2021 General Electric Company – All rights reserved. GE, the GE Monogram and AIR are trademarks of General Electric Company. JB79133XX



PROGRAM | FRIDAY 31 MARCH 2023

09:00 - 10:30

SESSION 1: AORTIC VALVE I

Chairpersons: **D. Ketikoglou** (GR), **P. Nihoyannopoulos** (GR)

Discussants: **N. Zois** (GR), **D. Kaipis** (GR), **V. Kamperidis** (GR), **A. Kitsiou** (GR),
H. Soliman Aboumarie (UK)

Echocardiographic evaluation of aortic stenosis

S. Karagiannis (GR)

Low flow/Low Gradient aortic stenosis: diagnostic algorithm

E. Sade (TR)

Left ventricular strain imaging in patients with moderate aortic stenosis

J. Bax (NL)

Detection of native and bioprosthetic aortic valve disease with PET scan

A. Gimelli (IT)

Multimodality imaging for timing of aortic valve replacement. Is myocardial damage important?

T. Edvardsen (NO)

Discussion

10:30 - 11:00

COFFEE BREAK

11:00 - 12:30

SESSION 2: AORTIC VALVE II

Chairpersons: **I. Karabinos** (GR), **K. Aggeli** (GR)

Discussants: **I. Kotlar** (NMK), **A. Roubelakis** (GR), **K. Mitrousi** (GR), **I. Ntalas** (GR),
M. A. Vannan (USA)

How do I select my TAVR patients? Focus on ESC guidelines 2021

S. Loizos (GR)

TAVR vs SAVR in low risk patients: 2023 update

K. Toutouzas (GR)

Planning patients for TAVR. The role of cardiac CT

B. Ariff (UK)

Multimodality assessment of aortic annulus. Is Cardiac CT the only option?

T. Zagklavara (GR)



PROGRAM | FRIDAY 31 MARCH 2023

Imaging assessment of subclinical leaflet thrombosis and structural valve deterioration

J. Cavalcante (USA)

Discussion

12:30 - 14:00

SESSION 3: SPECIAL SCENARIOS IN AORTIC VALVE DISEASES

Chairpersons: **I. Paraskevaidis** (GR), **G. Athanassopoulos** (GR)

Discussants: **N. Kassinis** (GR), **J. Cavalcante** (USA), **S. Kounas** (GR),
S. Evangelou (GR), **G. Chatzantonis** (GR)

POCUS in acute aortic syndromes

H. Soliman Aboumarie (UK)

Bicuspid aortic valve and TAVR

N. Hamid (USA)

TOE use in TAVR complications

S. Mihaila-Baldea (RO)

Difficult cases of Transfemoral TAVR: The role of CT

G. Pontone (IT)

Aortic stenosis and cardiac amyloidosis

C. Bucciarelli-Ducci (UK)

Discussion

14:00 - 15:00

LUNCH BREAK

15:00 - 16:30

SESSION 4: MITRAL VALVE I

Chairpersons: **B. Popescu** (RO), **S. Karagiannis** (GR)

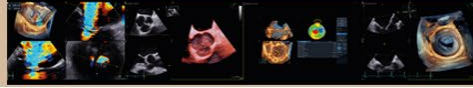
Discussants: **K. Katogiannis** (GR), **O. Ozden** (TR), **G. Pattakos** (GR),
X. Zhou (CN)

Arrhythmic mitral valve syndrome-Mitral annular disjunction

C. Papadopoulos (GR)

The role of 4D echocardiography in mitral valve assessment

K. Papadopoulos (GR)



PROGRAM | FRIDAY 31 MARCH 2023

Endoscopic repair of mitral valve prolapse

A. Pitsis (GR)

TEE or ICE for guiding transcatheter procedures in mitral regurgitation?

M. A. Vannan (USA)

The role of Exercise echocardiography in mitral valve diseases

C. Mihos (USA)

Discussion

16:30 - 18:00

SESSION 5: MITRAL VALVE II

Chairpersons: **M. Vavuranakis (GR), A. Patrianakos (GR)**

Discussants: **I. Ikonomidis (GR), M. Taramasso (SH), D. D. Wang (USA),
D. Klettas (GR), K. Papadopoulos (GR), H. Mahmoud-Elsayed (EG)**

Transcatheter edge-to-edge (TEER): Selection criteria and guidance for transcatheter mitral Valve repair

O. Ozden (TR)

Updates in transcatheter mitral valve replacement

V. Ninios (GR)

Mitral-TEER with the PASCAL device

K. Spargias (GR)

Transcatheter treatment options for management of functional mitral regurgitation

I. Ninios (GR)

Outcomes after TEER according to the etiology of MR and LV remodeling

N. Ajmone Marsan (NL)

Discussion

18:00 - 18:30

COFFEE BREAK



PROGRAM | FRIDAY 31 MARCH 2023

18:30 - 19:30

SESSION 6: JEOPARDY

Moderators: **S. Karagiannis (GR), K. Papadopoulos (GR), L. Badano (IT), M. A. Vannan (USA)**

The "Greek" Team

V. Sachpekidis (GR), C. Papadopoulos (GR), A. Theodosis-Georgilas (GR), A. Patrianakos (GR)

The "European" Team

I. Kotlar (NMK), S. Mihaila-Baldea (RO), N. Merke (DE), B. Popescu (RO)

The "World" Team

H. Mahmoud-Elsayed (EG), O. Ozden (TR), C. Mihos (USA), J. Cavalcante (USA)

19:30 - 20:00

OPENING CEREMONY

Welcome Address

A. Stefanidis



ΟΜΙΛΟΣ ΙΑΤΡΙΚΟΥ ΑΘΗΝΩΝ



www.iatriko.gr



PROGRAM | SATURDAY 1 APRIL 2023

09:00 - 10:30

SESSION 7: SPECIAL SCENARIOS IN MITRAL VALVE DISEASES

Chairpersons: **K. Papadopoulos** (GR), **D. D. Wang** (USA)

Discussants: **S. Karagiannis** (GR), **E. Velegraki** (GR), **D. Tsiapras** (GR), **A. Pitsis** (GR),
E. Donal (FR)

Echocardiographic guidance of mitral valve paravalvular leak occlusion

C. Fiore (IT)

Speckle tracking echocardiography to decide the correct timing for intervention for primary mitral regurgitation

M. Cameli (IT)

The role of TEE in endoscopic mitral valve repair

K. Lolakos (GR)

Transcatheter mitral valve-in-valve, valve-in-ring and valve-in-MAC

V. Delgado (NL)

Complications following MitraClip implantation

M. Vavuranakis (GR)

Discussion

10:30 - 11:00

COFFEE BREAK

11:00 - 12:30

SESSION 8: HOW TO USE OCCLUDERS IN MY ROUTINE PRACTICE

Chairpersons: **T. Edvardsen** (NO), **A. Theodosis-Georgilas** (GR)

Discussants: **K. Hristova** (BG), **F. Mitropoulos** (GR), **A. Tzifa** (GR),
C. Moldovan (DN), **C. Mihos** (USA)

Evaluation and transcatheter management of ostium secundum atrial septal defect

V. Sachpekidis (GR)

Evaluation and transcatheter management of ventricular septal defects

G. Di Salvo (IT)

Imaging planning for left atrial appendage occlusion. Echo? CT? or both?

D. D. Wang (USA)



PROGRAM | SATURDAY 1 APRIL 2023

Left atrial appendage occlusion complications: Peri-device leaks and more

A. Tzikas (GR)

Screening and guidance for patent foramen ovale occlusion

M. Drakopoulou (GR)

Discussion

12:30 - 14:00

SESSION 9: RIGHT HEART I

Chairpersons: **L. P. Badano (IT), J. Bax (NL)**

Discussants: **O. Ozden (TR), G. Makavos (GR), A. Theodosis-Georgilas (GR), I. Palios (GR), I. Ikonomidis (GR)**

Echocardiographic anatomic assessment of tricuspid valve

L. Badano (IT)

Pathophysiology, grading and outcome of tricuspid regurgitation

R. Hahn (USA)

Right Ventricle assessment by speckle tracking echocardiography

K. Hristova (BG)

The role of MRI in the assessment of the dysfunctional right ventricle

S. Moharem-Elgamal (UK)

Dysfunctional right ventricle and tricuspid TEER: When is it too late to intervene?

E. Surkova (UK)

Discussion

14:00 - 15:00

LUNCH BREAK



PROGRAM | SATURDAY 1 APRIL 2023

15:00 - 16:30

SESSION 10: RIGHT HEART II

Chairpersons: **F. Maisano** (IT), **M. A. Vannan** (USA)

Discussants: **V. Ninios** (GR), **K. Spargias** (GR), **J. Cavalcante** (USA),

N. Ajmone-Marsan (NL), **J. Bax** (NL)

Echocardiographic selection criteria for Tricuspid / TEER

N. Merke (DE)

Peri-procedural guidance for transcatheter tricuspid valve interventions

E. Donal (FR)

Updates in transcatheter tricuspid valve replacement

F. Maisano (IT)

Updates in transcatheter tricuspid valve repair / TEER

M. Taramasso (SH)

3D/4D ICE use in transcatheter repair of tricuspid regurgitation

M. A. Vannan (USA)

Discussion

16:30 - 17:00

COFFEE BREAK

17:00 - 18:30

SESSION 11: RIGHT HEART III

Chairpersons: **D. Muraru** (IT), **L. Rallidis** (GR)

Discussants: **N. Kadoglou** (GR), **P. Papadimitriou** (GR), **A. Pitsis** (GR),

G. Di Salvo (IT), **S. Moharem-Elgamal** (UK)

Does atrial fibrillation affect tricuspid valve geometry and regurgitation severity?

D. Muraru (IT)

Outcomes after surgical and transcatheter tricuspid valve interventions

M. Chrissoheris (GR)

Endoscopic surgical repair of tricuspid regurgitation

A. Roubelakis (GR)

Imaging of pulmonary valve

T. Kemalolu Oz (TR)



PROGRAM | SATURDAY 1 APRIL 2023

Native pulmonary valve treatment options

A. Tzifa (GR)

Discussion

18:30 - 20:00

SESSION 12: WHAT DID WE LEARN IN 2022, WHAT TO EXPECT IN THE FUTURE?

Chairpersons: **E. Donal** (FR), **I. Ikonmidis** (GR)

Discussants: **A. Frogoudaki** (GR), **K. Keramida** (GR), **L. E. Sade** (TR)

What is new in pulmonary hypertension ESC guidelines?

G. Giannakoulas (GR)

What is new in cardio-oncology ESC guidelines?

B. Cosyns (BE)

Artificial intelligence, augmented and virtual reality in cardiac imaging

A. Stefanidis (GR)

Discussion

20:00

CLOSING REMARKS



WORKSHOPS / HANDS-ON

ROOM 1: GE HEALTHCARE WORKSHOPS

“Advanced Chamber and Valvular analysis with EchoPAC Workstation”

1. Chambers assessment part I

Friday
12:00 - 13:00
4D Evaluation of LV
K. Papadopoulos, L. P. Badano

Friday
13:00 - 14:00
4D Evaluation of RV
L. P. Badano, K. Papadopoulos

2. Chambers assessment part II

Friday
16:30 - 18:00
LV strain and Myocardial Work
S. Karagiannis, B. Popescu

Saturday
12:30 - 14:00
Stress Echocardiography
S. Karagiannis, C. Papadopoulos

Saturday
15:00 - 16:00
LA assessment (4D & Strain)
C. Mihos, K. Papadopoulos

4D Valves Assessment

Saturday
11:00 - 12:30
MV-TV Assessment
K. Papadopoulos, L. P. Badano

ROOM 1: 3MENSIO WORKSHOPS

Moderators: **A. Tzikas, J. Cavalcante**

Friday
14:30 - 16:30
Valves Assessment (Mitral-TMVR, Aortic TAVR)

Saturday
17:00 - 18:00
LAA assessment



WORKSHOPS / HANDS-ON

ROOM 2: PHILIPS/ TOMTEC WORKSHOPS

Moderators/Instructors: **H. Mahmoud-Elsayed, D. Muraru**

Workshop 1: “Mitral Valve prolapse; what can 3D Echocardiography add? Explaining the added value of 3D Echocardiography in diagnosing Mitral valve prolapse and understanding the descriptive anatomy of the mitral valve”

Workshop 2: “Advanced echocardiographic assessment of RV size and function (clinical added value of 3D echo and strain in various cardiovascular conditions)”

Friday
15:00 - 16:30

Mitral Valve prolapse
H. Mahmoud-Elsayed

Friday
16:30 - 18:00

Assessment of right ventricle
D. Muraru

Saturday
15:00 - 16:30

Assessment of right ventricle
D. Muraru

Saturday
17:00 - 18:30

Mitral Valve prolapse
H. Mahmoud-Elsayed

Room 2: HEARTWORKS WORKSHOPS

Transesophageal Echocardiography simulation Training Workshop. “HeartWorks intelligence Ultrasound”

Instructor: **A. Tsoukas**

Hands-on training on TOE simulators that will include different clinical scenarios. Topics covered: Cardiac anatomy, TEE protocol, normal study, heart valve diseases, prosthetic valves, endocarditis, acute aortic syndromes, congenital heart diseases, acute pulmonary embolism, cardiac tamponade

Friday
10:30-12:00

TOE Simulation

Saturday
12:30-14:00

TOE Simulation 2



LIFE FROM INSIDE

The contrast imaging specialists



iomeron[®]
Iomeprol

400
High concentration

Higher signal in first-pass CT



Reduced

- contrast volume and flow rate
- radiation dose in CTA
- risk of CIN



ProHance[®]
gadoteridol

Trust the Pro

- Pro**udly macrocyclic
- Pro**udly different
- Pro**udly rapid
- Pro**udly effective
- Pro**udly well tolerated

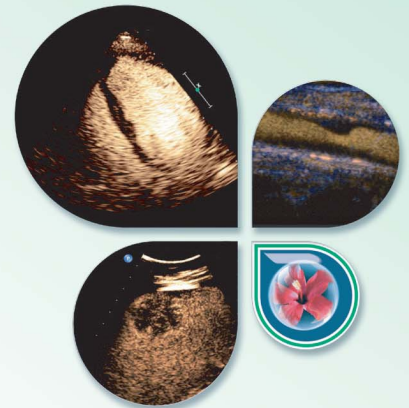
Not only promises

Proofs



SONOVUE[®]
sulphur hexafluoride

Experience Real Time Diagnosis



CEUS in

- Liver Imaging
- Vascular Imaging
- Cardiac Imaging

& for detection of vesicoureteral reflux



Committed to Science,
Committed to You.[™]

LIFE FROM INSIDE



Α. Πηγής 33 & Αναπήρων Πολέμου 6, 151 27 Μελίσσια, Αθήνα
T. 210 6199886 - www.leriva.com



FACULTY LIST

- K. Aggeli** / Professor of Cardiology, 1st University Cardiology Dept, "Hippokration" GH, Athens, Greece
- N. Ajmone Marsan** / Consultant Cardiologist, Dept of Cardiology, Leiden University Medical Center, the Netherlands
- B. Ariff** / MRCP, FRCR, PhD, FSCCT, FSCMR, FEACVI, Imperial College Healthcare NHS Trust, London, Great Britain
- G. Athanassopoulos** / MD, FESC Director Cardiology Section, Onassis Cardiac Surgery Center, Athens, Visiting Professor of Cardiology, University of Belgrade
- L. P. Badano** / MD, PhD, FESC, FACC Honorary Fellow ASE, BSE and EACVI, Professor of Cardiovascular Medicine, University of Milano-Bicocca, Director of the Integrated Cardiovascular Diagnosis Unit, Dept of Cardiology, Istituto Auxologico Italiano, IRCCS, Milan, Italy
- J. Bax** / MD, PhD, FESC, FACC, Professor of Cardiology, Director of Noninvasive Imaging, Dept of Cardiology, Leiden University Medical Centre (LUMC), Leiden, The Netherlands Immediate Past-President, European Society of Cardiology (ESC) 2018-2020
- C. Bucciarelli-Ducci** / Consultant Cardiologist, Royal Brompton & Harefield Clinical Group, Guy's and St Thomas' NHS Foundation Trust, King's College London, UK
- M. Cameli** / Associate Professor of Cardiology, EACVI Secretary, University of Siena, Italy
- J. Cavalcante** / Section Head, Cardiac Imaging, Minneapolis Heart Institute, Scientific Director, MHIF Cardiovascular Imaging Research Center, Minneapolis Heart Institute Foundation, Minnesota, USA
- G. Chatzantonis** / MD, PhD, Consultant Cardiologist, Dept of Cardiovascular MRI, Athens Medical Center, Greece
- M. Chrissoheris** / Cardiologist, Associate Director, Transcatheter Heart Valves Dept, HYGEIA Hospital, Athens, Greece
- B. Cosyns** / Head of Cardiology Dept, Co-director of in vivo and cellular imaging center (ICMI), Co-director of the CHVZ core lab in coronary artery physiology, Professor of Clinical Cardiology, University of Brussels, Belgium
- V. Delgado** / MD, PhD, FESC, Leiden University Medical Centre, The Netherlands
- G. Di Salvo** / Full Professor of Pediatric Cardiology, University of Padua, Director of Paediatric Cardiology and Congenital Heart Disease Unit, Woman and Child Health Dept, & Chair of Experimental Cardiology, Pediatric Research Institute, Padova, Italy
- E. Donal** / Professor of Cardiology, Chu Rennes - University Rennes1-LTSI-Inserm 1099, France
- M. Drakopoulou** / Consultant Cardiologist in ACHD and PH, 1st Dept of Cardiology, "Hippokration" University Hospital, Athens
- T. Edvardsen** / Professor, Director of Dept of Cardiology, Oslo University Hospital, Oslo, Norway



FACULTY LIST

S. Evangelou / Cardiologist, MD, European Interbalkan Medical Center, Thessaloniki, FiRST Committee (Society of Cardiovascular Computed tomography)

C. Fiore / Head of EchoLab Citta di Lecce Hospital, Italy

A. Frogoudaki / MD, MSc, PhD, FHFA, FESC, Consultant Cardiologist, Head Adult Congenital Heart Clinic, Inherited Cardiomyopathies Clinic, Second Cardiology Dept, ATTIKON University Hospital, Athens, Greece

G. Giannakoulas / Associate Professor in Cardiology, Aristotle University of Thessaloniki, "AHEPA" General University Hospital, Thessaloniki, Greece

A. Gimelli / MD, FESC, Editor in Chief of EHJ Imaging Methods and Practice, Pisa, Italy

R. Hahn / Professor of Medicine, Columbia University, Irving Medical Center in New York, Chief Scientific Officer, Echo Core Lab Cardiovascular Research Foundation, Director of Interventional Echocardiography, New York Presbyterian/Columbia Campus Structural & Valve Center, New York, USA

N. Hamid / Assistant Professor of Medicine, Assistant Director Structural Heart Echocardiography, Cardiologist, Minneapolis Heart Institute, Abbott Northwestern Hospital, Minneapolis, Minnesota, USA

K. Hristova / MD, PhD, FESC, FEACVI, Associate Professor of Cardiology, University National Heart Hospital, Center for cardiovascular Diseases, Sofia, Bulgaria

I. Ikonomidis / Professor of Cardiology, 2nd Cardiology Clinic of National and Kapodistrian University of Athens, Medical School, General University Hospital "Attikon", Athens, Greece

N. Kadoglou / Lecturer of Cardiology, University of Cyprus, Nicosia, Cyprus

D. Kaipis / Cardiologist, Partner of the European Interbalkan Medical Center, Thessaloniki, Greece

V. Kamperidis / Assistant Professor of Cardiology AUTH, 1st Cardiology Dept, AHEPA UGH, Thessaloniki, Greece

I. Karabinos / MD, PhD, Cardiologist, Director, 3rd Cardiology Dept, Euroclinic, Athens, Greece

S. Karagiannis / MD, PhD, FESC, Cardiologist, Head of Echocardiology Dept, Athens Medical Center, Athens, Greece

N. Kassinos / Cardiologist, Cardiological Dept, "Tzaneio" GH, Athens, Greece

K. Katogiannis / MD, PhD, Cardiologist, Academic Fellow, Laboratory of Preventive Cardiology and Laboratory of Echocardiography, 2nd Cardiology Dept, National and Kapodistrian University of Athens, GH Attikon, Athens, Greece

T. Kemalglou Öz / Associate professor, Liv Hospital Ulus, Istanbul & Istinye University, Turkey

K. Keramida / MD, MSc, PhD, FESC, FHFA, FICOS, Cardiology Dept, General Anti-Cancer, Oncological Hospital "Agios Savvas", Athens, Greece



FACULTY LIST

- D. Ketikoglou** / MD, PhD, FEACVI, FESC, Cardiologist, Head of Echocardiography laboratory, 1st Cardiology Clinic, European Interbalkan Medical Center, Thessaloniki, Greece
- A. Kitsiou** / Director, Cardiology Dept, Sismanoglio Hospital, Athens, Greece
- D. Klettas** / MD, MSc, PHD, Consultant Cardiologist, Cardiac Imaging Specialist, "Hippokration" GH, Athens, Greece, NHS Cardiology Consultant
- I. Kotlar** / MD, Cardiologist, University Clinic of Cardiology, Skopje, North Macedonia
- S. Kounas** / Cardiologist, Director of Cardiology, Henry Dunant Hospital Center, Athens, Greece, EACVI Accreditation in Transthoracic and Transesophageal Echocardiography
- S. Loizos** / Consultant Cardiologist, HYGEIA Hospital, Athens, Greece
- K. Lolakos** / Cardiac Anaesthesiologist, EACVI Adult TOE Fully Certified, BSE FICE Certified, 1st Dept of Cardiac Surgery, European Interbalkan Medical Center, Thessaloniki, Greece
- H. Mahmoud-Elsayed** / MD, FESC, FASE, FEACVI, EACVI/Education Committee Member, Consultant Cardiologist, Director of Echocardiography Lab, Aswan Heart Center, Magdi Yacoub Foundation, Aswan, Egypt
- F. Maisano** / Professor in Cardiovascular Surgery, Director of Valve Center, San Raffaele Hospital, Milan, Italy
- G. Makavos** / Cardiologist, "Sotiria" Hospital, Athens, Greece
- N. Merke** / Deutsches Herzzentrum der Charité – Medical Heart Center of Charité and German Heart Institute Berlin, Dept of Cardiothoracic and Vascular Surgery, Charité – Universitätsmedizin Berlin, Corporate Member of Freie Universität Berlin and Humboldt-Universität zu Berlin, Dept of Cardiovascular Surgery, Berlin, Germany
- S. Mihaila-Baldea** / Assistant Professor in Cardiology, MD, PHD, EACVI Heart Imagers of Tomorrow Committee member, Dept of Cardiology and Cardiovascular Surgery, The Emergency and University Hospital Bucharest, The University of Medicine and Pharmacy Carol Davila Bucharest, Romania
- C. Mihos** / DO, Director of Echocardiography Laboratory, Columbia University Division of Cardiology, Mount Sinai Heart Institute, Miami Beach, FL, USA
- F. Mitropoulos** / MD, PhD, Cardiac Surgeon Adult and Paediatric, Director, Dept of Paediatric, Adult and Congenital Cardiac Surgery "Mitera" Hospital, HYGEIA Group, Athens, Greece
- K. Mitrousi** / MD, Cardiologist, Interbalkan Medical Center, Thessaloniki, Greece, Honorary Consultant Cardiologist, Cardiac MRI unit, Bristol Heart Institute
- S. Moharem-Elgamal** / Adult Congenital Heart Disease and Imaging Cardiologist at Liverpool Heart and Chest Hospital, UK
- C. Moldovan** / Cardiologist, Slagelse University Hospital, Denmark
- D. Muraru** / Associate Professor of Cardiology, EACVI Vice-President Echocardiography, University of Milano-Bicocca, Istituto Auxologico Italiano, IRCCS, San Luca Hospital, Milan, Italy



FACULTY LIST

- P. Nihoyannopoulos** / MD, FRCP, FACC, FESC, FACC, FAHA, Professor of Cardiology, Imperial College London, NHLI, Hammersmith Hospital, London, UK, Emeritus Professor of Cardiology, National and Kapodistrian University of Athens, Greece and Head of Cardiology Dept, Metropolitan Hospital, Athens, Greece
- I. Ninios** / Cardiologist, Doctor of Cardiologist of A.U.Th, European Interbalkan Medical Center, Thessaloniki, Greece
- V. Ninios** / Interventional Cardiologist, Director of Second Dept of Cardiology, European Interbalkan Medical Center, Thessaloniki, Greece
- I. Ntalas** / Cardiac Imaging Specialist (Level III EACVI, SCCT, SCMR), IANO Medical Center, Ioannina, Greece, Faculty Member London Cardiac CT Academy, UK
- Ö. Özden** / Cardiologist, ESC Young Professional Committee EACVI representative, ESC Communication Committee Member, EACVI Web & Communication Member, HIT Board Member, Memorial Bahcelievler Hospital, Cardiovascular Imaging Dept, Istanbul, Turkey
- I. Palios** / Cardiologist, Director Cardiac MRI Dept., Metropolitan Hospital, Athens, Greece
- P. Papadimitriou** / Consultant Cardiologist, Echocardiology Dept, Athens Medical Center, Greece
- C. Papadopoulos** / Cardiology, 1st Attending Physician, Cardiology Dept, Korgialenio - Benakio (Red Cross) GH, Athens, Greece
- K. Papadopoulos** / MD, PhD, FESC, FEACVI, Cardiologist, Echocardiography Lab, European Interbalkan Medical Center, Thessaloniki, Greece
- I. Paraskevaidis** / Professor of Cardiology, National & Kapodistrian University of Athens
- A. Patrianakos** / Consultant Cardiologist, Cardiological Clinic, UGH of Heraklio, Crete, Greece
- G. Pattakos** / Cardiac Surgeon, Assistant Director, 2nd Dept of Cardiac Surgery, Assistant Director, Dept of Transcatheter Heart Valves, HYGIEIA Hospital, Athens, Greece
- A. Pitsis** / MD, PhD, FETCS, FESC, Cardiac Surgeon, Director of the 1st Dept of Cardiac Surgery, European Interbalkan Medical Center, Thessaloniki, Greece
- G. Pontone** / MD, PhD, FESC, FEACVI, FSCCT, FISC, Cardiologist and Radiologist, Director of Perioperative Cardiology and Cardiovascular Imaging Dept, Co-Director of Sport Cardiology, Centro Cardiologico Monzino IRCCS, University of Milan, Italy, EACVI Vice President Elect – Section Nuclear & CT, EACVI Scientific Committee Deputy Chair
- B. Popescu** / MD, PhD, FESC, FACC, HonFEACVI, Professor of Cardiology, University of Medicine and Pharmacy "Carol Davila", Head, Cardiology Dept, Emergency Institute of Cardiovascular Diseases "Prof. Dr. C. C. Iliescu", Bucharest, Romania, President, Romanian Society of Cardiology, European Society of Cardiology Board member - EORP Committee Chair
- L. Rallidis** / Professor of Cardiology, University General Hospital Attikon, Athens, Greece
- A. Roubelakis** / MD, PhD, FETCS, Director, 3rd Dept of Cardiac Surgery, Athens Medical Center, Robotics and Minimally Invasive Cardiac Surgery Specialist, Athens, Greece



FACULTY LIST

- V. Sachpekidis** / Consultant Cardiologist, “Papageorgiou” GH, Thessaloniki, Greece
- L. E. Sade** / Professor of Medicine, Chair, Education Committee - EACVI, University of Pittsburgh, Heart & Vascular Institute UPMC, Pittsburgh, USA
- H. Soliman Aboumarie** / Consultant in Cardiothoracic Intensive Care, Harefield Hospital, Royal Brompton and Harefield Hospitals, Guys and St Thomas NHS Foundation Trust, London, UK, Member of the Board, Councilor for Echocardiography, European Association of Cardiovascular Imaging (EACVI)
- K. Spargias** / MD, PhD, FESC, Interventional Cardiologist, Director, Transcatheter Heart Valves Dept, HYGEIA Hospital, Athens, Greece
- A. Stefanidis** / Consultant Cardiologist, Gen. Host. of Nikea, Athens, Greece, EACVI lab accreditation committee (Chair)
- E. Surkova** / MD, MSc, PhD, FESC, Cardiologist, Royal Brompton and Harefield Hospitals, Part of Guy’s and St Thomas’ NHS Foundation Trust, London, UK
- M. Taramasso** / MD, PhD, Cardiac Surgeon, HerzZentrum Hirslanden Zurich, Switzerland
- A. Theodosis - Georgilas** / Cardiologist, Consultant, "Tzaneio" General Hospital of Piraeus
- K. Toutouzas** / Professor of Cardiology, Athens University, 1st University Cardiology Dept, “Hippokration” GH, Athens, Greece, Director of Structural Heart Disease and Valve Disease Unit
- D. Tsiapras** / Consultant Cardiologist, Non-Invasive Cardiology Specialist, Cardiology Dept, Onassis Cardiac Surgery Center, Athens, Greece
- A. Tzifa** / Director, Paediatric and Adult Congenital Heart Disease Dept, “Mitera” Hospital, Hygeia Group, Hon. Clinical Senior Lecturer, King’s College, London
- A. Tzikas** / MD, PhD, FESC, Interventional Cardiologist, Structural & Congenital Heart Disease, European Interbalkan Medical Center, Thessaloniki, Greece
- M. A. Vannan** / MBBS, FACC, FAHA, FASE, Structural and Valvular Center of Excellence, Marcus Heart Valve Center, Piedmont Heart Institute, Atlanta, GA, USA
- M. Vavuranakis** / FESC, FACC, FSCAI, Professor of Cardiology, Athens University, Cardiology Dept, "SOTIRIA" GH, Athens, Adjunct Professor, Ohio State University, USA
- E. Velegraki** / Cardiologist, Clinical Fellow in Advanced Echocardiography, King’s College Hospital, London, Ambassador for Echocardiography HIT EACVI
- D.-D. Wang** / MD, Cardiologist, Detroit, USA
- T. Zagklavara** / MD, PhD, Cardiologist, Advanced Cardiovascular Imaging Dept and 1st Cardiothoracic Surgery Dept, European Interbalkan Medical Center, Thessaloniki, Greece
- X. Zhou** /
- N. Zois** / Cardiologist, University Hospital of Ioannina, Greece



ACKNOWLEDGEMENTS



Edwards™



GE HealthCare

3mensio

PIE
MEDICAL
IMAGING



NEOSOFT

