

UP-TO-DATE 4D ECHOCARDIOGRAPHY

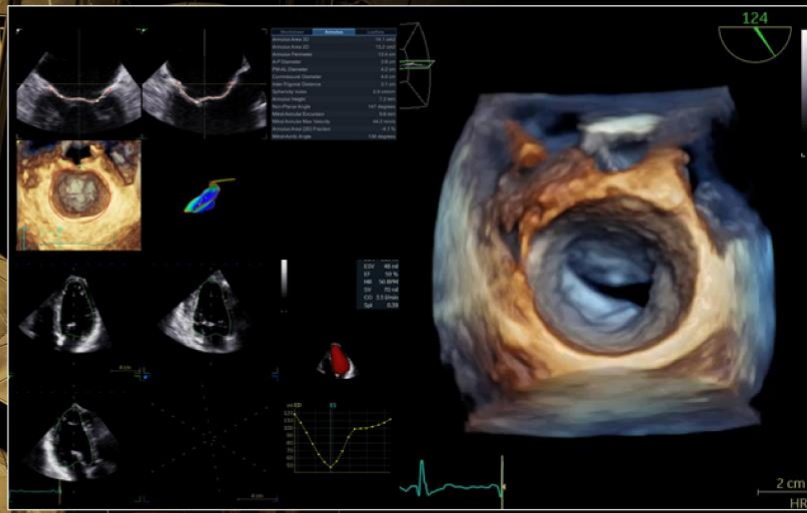
INTENSIVE HANDS-ON 4D TTE & TOE ECHO COURSE

7-8 OCTOBER 2023

EUROPEAN INTERBALKAN MEDICAL CENTER
THESSALONIKI / GREECE



PCO
INVENTICS A.E. / Medevents.gr
T. 2310 474 400 / E. info@medevents.gr / W. www.medevents.gr
GNTD License: 0933E6000074600



COURSE DIRECTORS



PROF. LUIGI P. BADANO



DR. K. PAPAPOPOULOS

Up-To-Date 4D Echocardiography: Intensive hands-on 4D TTE and TOE echo course October 7th-8th, 2023

Venue: European Interbalkan Medical Center, Thessaloniki, Greece

Course Directors: Prof Luigi Badano, Dr Konstantinos Papadopoulos

Aim of the course: This course addresses to all 4D echo users and aims at fully understand the best way to acquire and analyze patients using the 4D echocardiography.

Registration fee:

- A) 500 euros for hands-on education (physical attendance)
- B) 350 euros for hands-on virtual education
- C) 150 euros for online attendance

Registration includes coffee breaks, 2 lunches and 1 dinner on Saturday night

- All participants that will join online will receive certificate of attendance accredited with CME points
- All participants that will do hands-on will receive certificate of education accredited with CME points

* registration does not include transfer from and to airport and accommodation

Organized by University of Milano in collaboration with Inventics S.A.

<http://www.inventics.net/>

Correspondence:

Konstantinos Papadopoulos, MD, PhD, FESC, FEACVI

Mob: +306937435062. | Email: papadocardio@gmail.com, papadopoulos@pericardium.gr

UP-TO-DATE 4D ECHOCARDIOGRAPHY

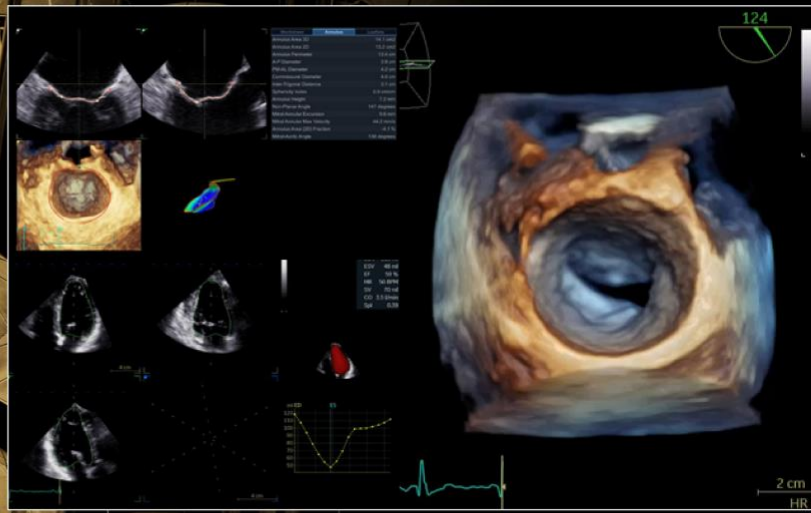
INTENSIVE HANDS-ON 4D TTE & TOE ECHO COURSE

7-8 OCTOBER 2023

EUROPEAN INTERBALKAN MEDICAL CENTER
THESSALONIKI / GREECE



PCO
INVENTICS A.E. / Medevents.gr
T. 2310 474 400 / E. info@medevents.gr / W. www.medevents.gr
GNTD License: 0933E6000074600



COURSE DIRECTORS



PROF. LUIGI P. BADANO



DR. K. PAPAPOPOULOS

Course program

1st Day: Chambers evaluation

- 08:00-08:30 Welcome: Connection of participants to EchoPAC
- 08:30-09:00 Basics of 4D echocardiography. How to apply the method in routine practice (lecture)
K. Papadopoulos
- 09:00-10:00 Workstation session I: Learn how to optimize my 4D images in EchoPAC
K. Benekos
- 10:00-10:30 How to assess left ventricle and left atrium with 4D (lecture)
L. Badano
- 10:30-11:00 Live session I: LV acquisition and assessment
K. Papadopoulos
- 11:00-11:30 **Coffee Break (Live scanning on Vivid E95 during the break)**
- 11:30-13:30 Workstation session II: LV/LA assessment (Multislice, Triplane, 4D AutoLVQ, 4D AutoLAQ, AFI LA)
LV assessment: **K. Papadopoulos**
LA assessment: **L. Badano**
- 13:30-14:00 How to assess left ventricle with 2D AFI, triplane AFI
Myocardial work, 4D strain (lecture)
K. Papadopoulos

UP-TO-DATE 4D ECHOCARDIOGRAPHY

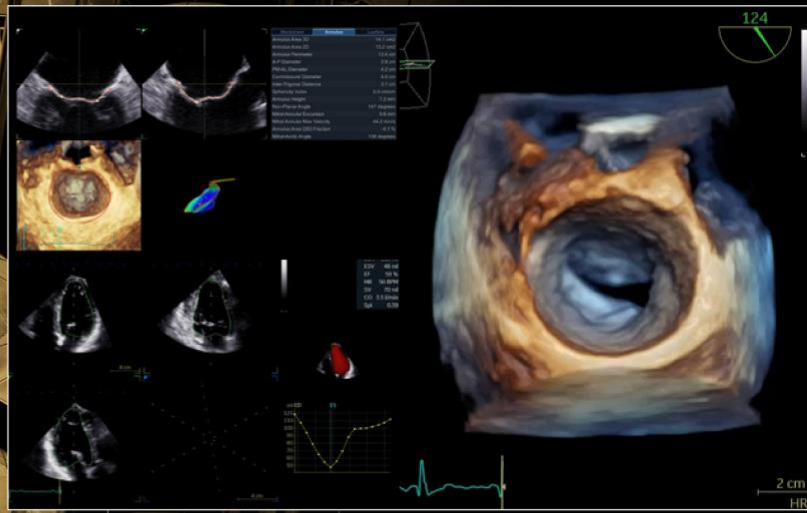
INTENSIVE HANDS-ON 4D TTE & TOE ECHO COURSE

7-8 OCTOBER 2023

EUROPEAN INTERBALKAN MEDICAL CENTER
THESSALONIKI / GREECE



PCO
INVENTICS A.E. / Medevents.gr
T. 2310 474 400 / E. info@medevents.gr / W. www.medevents.gr
GNT0 License: 0933E6000074600



COURSE DIRECTORS



PROF. LUIGI P. BADANO



DR. K. PAPADOPOULOS

1st Day: Chambers evaluation

- 14:00-14:45** Lunch Break (Live scanning on Vivid E95 during the break)
- 14:45-16:15** Workstation session III: LV assessment (triplane AFI-Myocardial work, 4D strain)
K. Papadopoulos
- 16:15-16:30** 4D Stress echocardiography. Feasibility and added value of the method (lecture)
L. Badano
- 16:30-17:00** Evaluation of right ventricle by 4D echocardiography (lecture)
L. Badano
- 17:00-17:15** Live session II: RV acquisition
K. Papadopoulos
- 17:15-17:45** Coffee break (Live scanning on Vivid E95 during the break)
- 17:45-19:00** Workstation session IV: RV assessment
L. Badano
- 19:30** Dinner

UP-TO-DATE 4D ECHOCARDIOGRAPHY

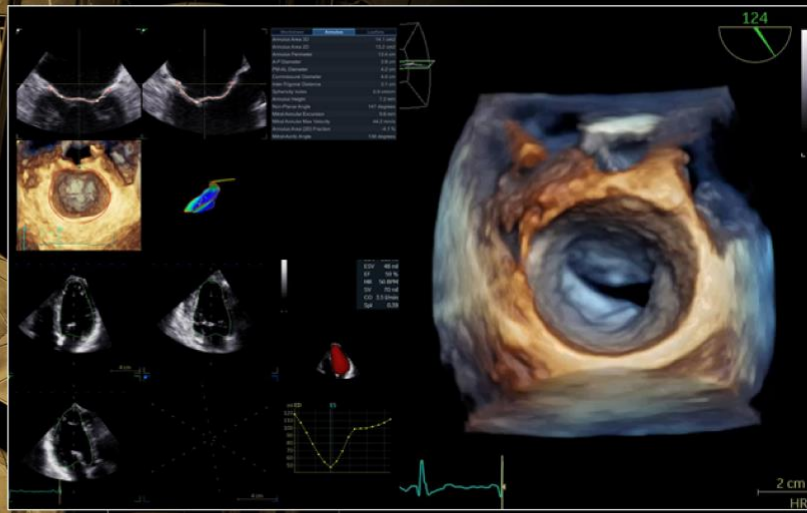
INTENSIVE HANDS-ON 4D TTE & TOE ECHO COURSE

7-8 OCTOBER 2023

EUROPEAN INTERBALKAN MEDICAL CENTER
THESSALONIKI / GREECE



PCO
INVENTICS A.E. / Medevents.gr
T. 2310 474 400 / E. info@medevents.gr / W. www.medevents.gr
GNT0 License: 0933E6000074600



COURSE DIRECTORS



PROF. LUIGI P. BADANO



DR. K. PAPADOPOULOS

2nd Day: Valvular assessment/Transcatheter interventions

- 08:30-08:45 4D Aortic annulus assessment – TAVI preparation (lecture)
L. Badano
- 08:45-09:30 Workstation session V: AoV analysis
K. Papadopoulos
- 09:30-10:00 Mitral valve assessment (lecture)
K. Papadopoulos
- 10:00-10:30 **Coffee break (Live scanning on Vivid E95 during the break)**
- 10:30-10:40 Live session IV: acquisition of MV by TTE
K. Papadopoulos
- 10:40-13:00 Workstation session VI: MV analysis
K. Papadopoulos
(4D zoom-full volume TTE and TOE, 4D AutoMVQ, Flexislice for VCA and MVA in mitral stenosis, Understanding DMR and FMR cases)
- 13:00-13:45 **Lunch break (Live scanning on Vivid E95 during the break)**
- 13:45-14:30 4D Tricuspid valve assessment (lecture)
L. Badano
- 14:30-15:30 Workstation session VII: TV analysis (4D zoom, Full volume, 4D AutoTVQ)
L. Badano

UP-TO-DATE 4D ECHOCARDIOGRAPHY

INTENSIVE HANDS-ON 4D TTE & TOE ECHO COURSE

7-8 OCTOBER 2023

EUROPEAN INTERBALKAN MEDICAL CENTER
THESSALONIKI / GREECE



PCD
INVENTICS A.E. / Medevents.gr
T. 2310 474 400 / E. info@medevents.gr / W. www.medevents.gr
GNTD License: 0933E6000074600



EUROPEAN
INTERBALKAN
MEDICAL CENTER



ISTITUTO
AUXOLOGICO
ITALIANO
Istituto di ricovero e cura a carattere scientifico

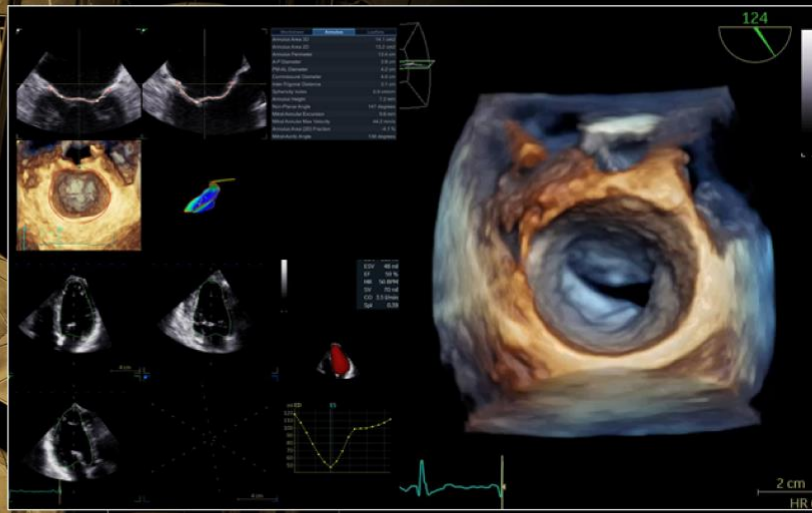
COURSE DIRECTORS



PROF. LUIGI P. BADANO



DR. K. PAPADOPOULOS



2nd Day: Valvular assessment/Transcatheter interventions

Transcatheter Interventions:

- 15:30-16:00 Pre-procedure assessment of PFO and ASD (lecture)
L. Badano
- 16:00-16:15 Intra-operative guidance for PFO and ASD closure (lecture)
K. Papadopoulos
- 16:15-17:00 **Coffee Break (Live scanning on Vivid E95 during the break)**
- 17:00-17:15 Echo guidance for LAA occlusion (lecture)
K. Papadopoulos
- 17:15-17:45 Selection criteria and echo-guidance for edge-to-edge mitral valve repair (lecture)
L. Badano
- 17:45-18:00 Challenging Mitral-TEER cases (lecture)
K. Papadopoulos

End of course

***** During the course 2 Vivid E95 machines with 4Vc probes will be available for hands-on practice on models from the participants. Live scanning will take part during coffee and lunch breaks.**